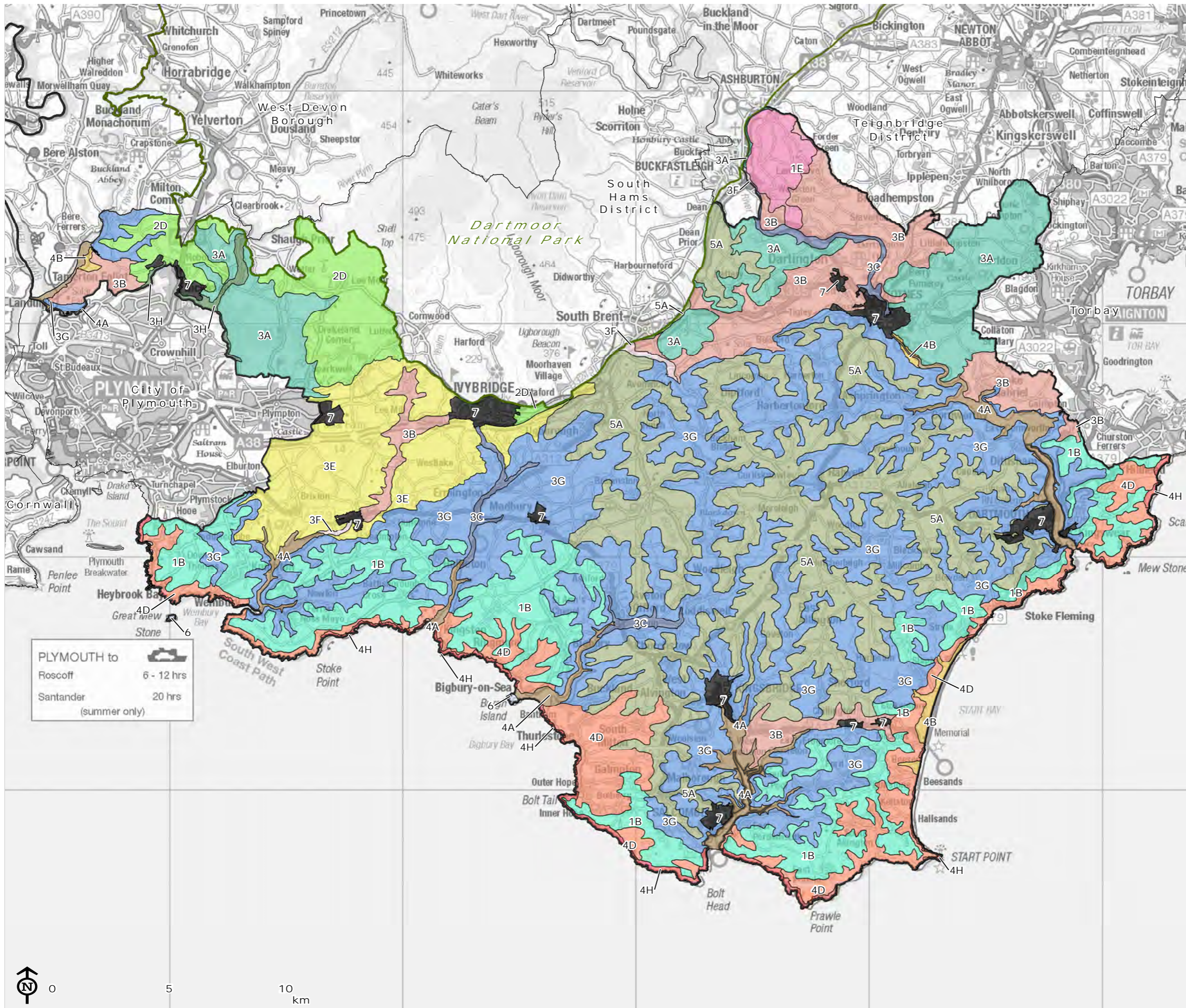


South Hams and West Devon LCA Update

Figure 2.2a: The Landscape Character Type Classification of South Hams



- 1B. Open coastal plateaux
- 1E. Wooded ridges and hilltops
- 2D. Moorland edge slopes
- 3A. Upper farmed and wooded valley slopes
- 3B. Lower rolling farmed and settled valley slopes
- 3C. Sparsely settled farmed valley floors
- 3E. Lowland plains
- 3F. Settled valley floors
- 3G. River valley slopes and combes
- 3H. Secluded valleys
- 4A. Estuaries
- 4B. Marine levels and coastal plains
- 4D. Coastal slopes and combes
- 4H. Cliffs
- 5A. Inland elevated undulating land
- 6. Offshore islands
- 7: Main towns/villages

PLYMOUTH to
 Roscoff 6 - 12 hrs
 Santander 20 hrs
 (summer only)

Map Scale @A3: 1:160,000

